

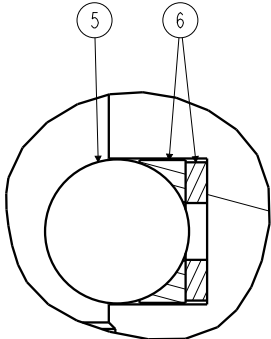
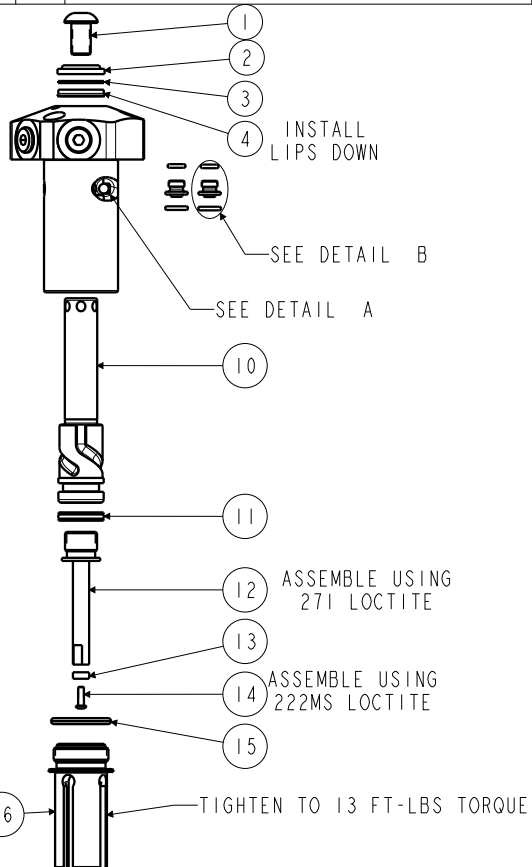
NO.	QTY.	DESCRIPTION	MODEL NUMBER			STANDARD SEAL KIT	FLUOROCARBON SEAL KIT
			14-6205-01-X-PS	14-6209-01-X-PS	14-6213-01-X-PS		
1	1	BUTTON HEAD CAP SCREW	21-4110-01	21-4100-09	21-4100-39	NO	NO
2	1	WIPER, ROD (FLUOROCARBON)	39-0530-04	39-0530-01	39-0530-00	YES	YES
3	1	BACK-UP RING, ROD	39-F540-00	39-F540-01	39-F540-02	YES	YES
4	1	SEAL, ROD (STANDARD)	39-0100-38	39-0100-20	39-0110-46	YES	NO
	1	SEAL, ROD (FLUOROCARBON)	39-0520-14	39-V100-20	39-V110-46	NO	YES
5	3	BALL, STEEL ALLOY	23-6000-14	23-6000-11	23-6000-02	YES	YES
6	3	BALL SEAT ASSEMBLY	90-1999-56	90-1999-57	90-1999-58	YES	YES
7	2	MANIFOLD MOUNT ADAPTOR	30-8711-20	30-8711-20	30-8711-20	YES	NO
	2	MANIFOLD MOUNT ADAPTOR (FLUOROCARBON)	30-8711-20F	30-8711-20F	30-8711-20F	NO	YES
8	2	O-RING, MANIFOLD (STANDARD)	39-0500-42	39-0500-42	39-0500-42	YES*	NO
	2	O-RING, MANIFOLD (FLUOROCARBON)	39-0510-25	39-0510-25	39-0510-25	NO	YES*
9	2	O-RING, ADAPTOR (STANDARD)	39-0500-36	39-0500-36	39-0500-36	YES*	NO
	2	O-RING, ADAPTOR (FLUOROCARBON)	39-0510-24	39-0510-24	39-0510-24	NO	YES*
10	1	PLUNGER, LEFT HAND (SHOWN)	81-4000-50	81-4000-51	81-4000-52	NO	NO
	1	PLUNGER, RIGHT HAND	81-4000-47	81-4000-48	81-4000-49	NO	NO
11	1	SEAL, PLUNGER (STANDARD)	39-H100-37	39-H100-18	39-H110-30	YES	NO
	1	SEAL, PLUNGER (FLUOROCARBON)	39-V100-37	39-V100-18	39-V110-30	NO	YES
12	1	STEM	81-5000-10	81-5000-11	81-5000-12	NO	NO
13	1	MAGNET	91-1000-01	91-1000-01	91-1000-01	NO	NO
14	1	BUTTON HEAD CAP SCREW	21-4100-61	21-4100-61	21-4100-61	NO	NO
15	1	O-RING, RETAINER (FLUOROCARBON)	39-V000-36	39-0510-31	N/A	YES	YES
	1	GASKET	N/A	N/A	39-T550-03	YES	YES
16	1	RETAINER	81-4000-44	81-4000-45	81-4000-46	NO	NO
N/A	N/A	SEAL KIT (STANDARD)	60-1400-06	60-1400-08	60-1400-10	INCLUDED IN KIT	
N/A	N/A	SEAL KIT (FLUOROCARBON)	6V-1400-06	6V-1400-08	6V-1400-10		

B

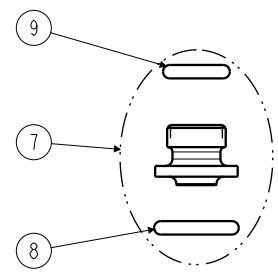
B

A

A



DETAIL A
SCALE 4.0



DETAIL B
SCALE 1.000

*NOTE: ITEMS INCLUDED IN NO. 7

Lubricate all seals with clean hydraulic fluid prior to assembly.



PARTS LIST	 VEKTEK, INC. 1334 E. SIXTH AVE. P.O. BOX 625 EMPORIA, KS. 66801 U.S.A.
14-6205-01-L-PS, 14-6205-01-L-F-PS 14-6205-01-R-PS, 14-6205-01-R-F-PS 14-6209-01-L-PS, 14-6209-01-L-F-PS 14-6209-01-R-PS, 14-6209-01-R-F-PS 14-6213-01-L-PS, 14-6213-01-L-F-PS 14-6213-01-R-PS, 14-6213-01-R-F-PS	PARTS LIST, SC, TF, HS, DA, PS
DATE: 03/10/05 DRAWING STATUS: Released PRODUCTION APPROVED FOR RELEASED STATUS ONLY	SIZE A P1416 REV H

H	5729	RELEASE	JDW	05/30/25
REV	IN ACCORDANCE WITH ECN	EFFECTIVE DATE	REVISED BY	DATE